

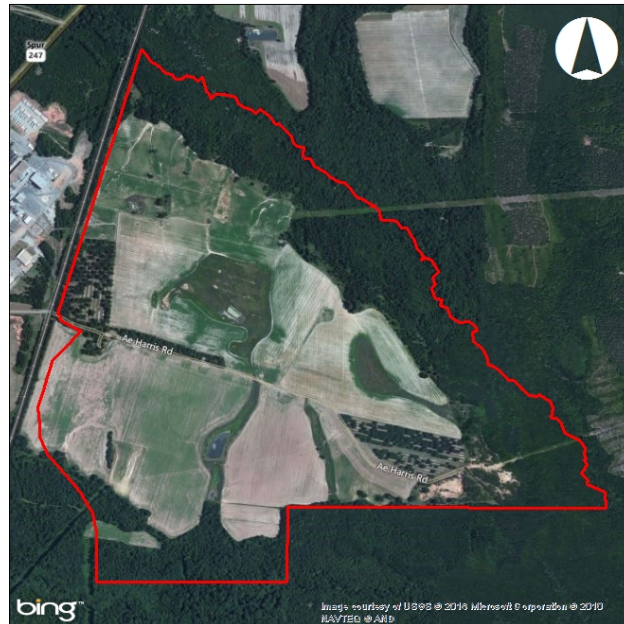
Houston County Rail Site

Perry, GA 31069

Houston County

Contact

Angie Gheesling
Houston County Development
Authority
200 Carl Vinson Parkway
Warner Robins, GA 31088
Phone: 478-923-5470
Fax: 478-923-5472
Email:
gheesling@houstoncountyga.net



Property

Total Acres	877.2 acres
Remaining Acres	877.2 acres
Largest Tract	877.2 acres
Largest Rail Tract	877.2 acres
GRAD Site	No
Zoning	Commercial
Rail Served	Yes

Utilities

Water On Site	No
Water Main Size	12 in
Sewer On Site	Yes
Sewer Main Size	10 in
Gas On Site	Yes
Gas Main Size	6 in
Electric Provider	Flint Energies

Incentives

Jobs Tax Credit	\$1750/job
Investment Tax Credit	6%
Opportunity Zone	No
Less Developed Census Tract	No

Transportation

Nearest Interstate	I-75
Distance to Interstate	7 miles
Nearest Port 1	Port of Savannah
Distance to Port 1	146 miles
Nearest Port 2	Port of Brunswick
Distance to Port 2	151 miles
Nearest International Airport	Hartsfield-Jackson Atlanta International
Distance to International Airport	94 miles

